



Whilst every effort is made to give a fair description, the accuracy of these particulars is not guaranteed, neither do they constitute an offer or contract.

**MATHESONS ESTATE AGENTS** have not tested any apparatus, equipment, fitting or services and so cannot verify that they are in working order. The buyer is advised to obtain verification from their solicitor or surveyor. Measurements are correct to within +/- 6 A sonic tape is used. None of the statements contained in these particulars or any of our properties are to be relied upon as a representation of fact.

166 Manor Park Road  
Harlesden  
London  
NW10 4JT  
T: 020 8965 2250  
E: sales@mathesonsestates.com  
www.mathesonsestates.com



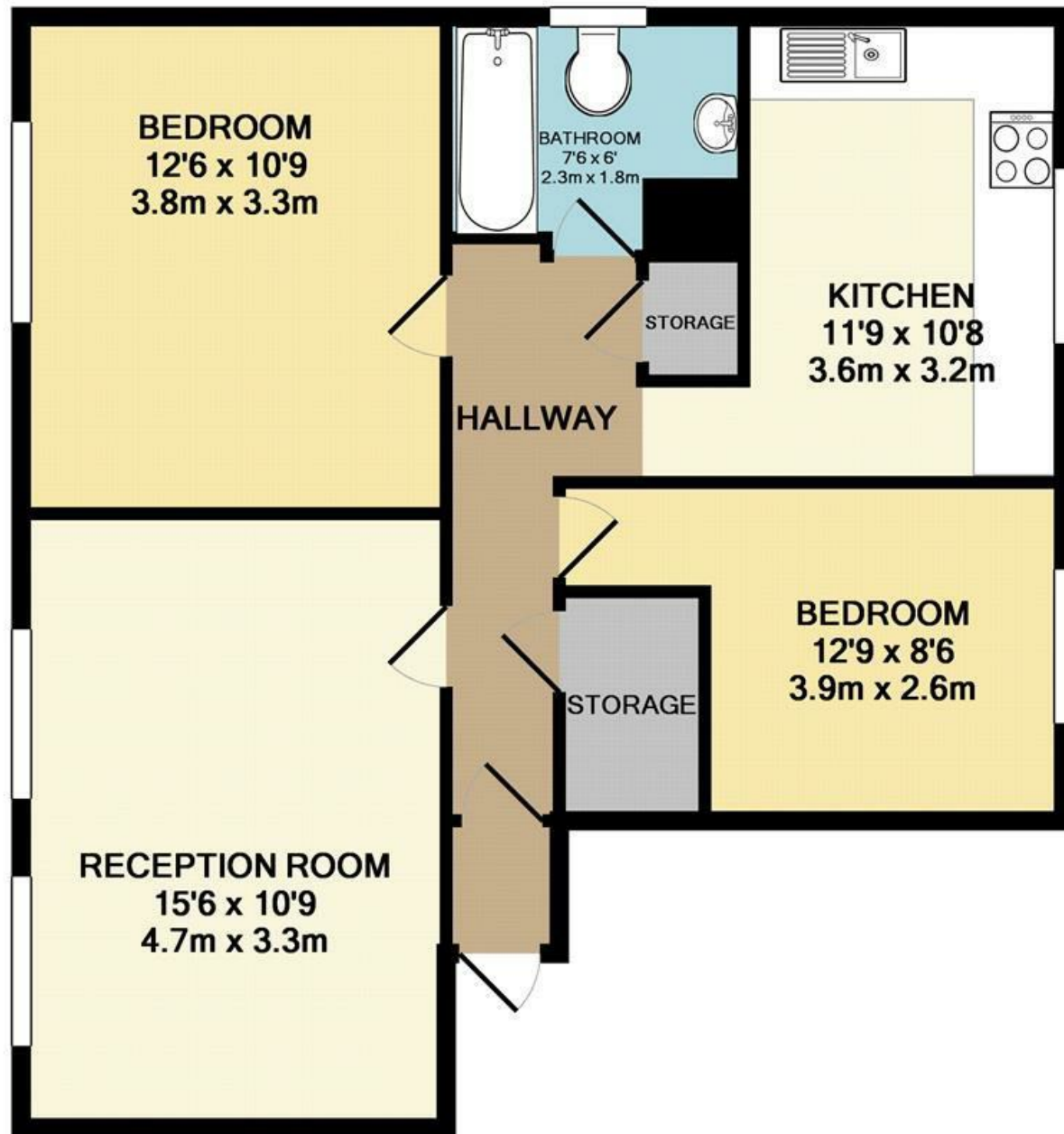
## Craven Park, London, NW10 8QL £369,950 Leasehold



### KEY FEATURES:

- WELL PRESENTED 2 DOUBLE BEDROOM FLAT
- Two double bedrooms
- Spacious reception room
- Modern fitted kitchen/diner
- Fully tiled bathroom
- Ample storage space
- Shared communal gardens

Well presented two double bedroom flat on the second floor of a purpose built development. The property offers a spacious reception room, modern fitted kitchen/diner, fully tiled bathroom, two double bedrooms, ample storage space, shared communal gardens. Suitable for a buy to let investor or first time buyer. Located within close proximity to schools, shopping amenities, and bus routes on Craven Park. Nearest station is Harlesden Station (Bakerloo Line, London Overground). Long lease.



TOTAL APPROX. FLOOR AREA 57.7 SQ.M. (621 SQ.FT.)

Whilst every attempt has been made to ensure the accuracy of the floor plan contained here, measurements of doors, windows, rooms and any other items are approximate and no responsibility is taken for any error, omission, or mis-statement. This plan is for illustrative purposes only and should be used as such by any prospective purchaser. The services, systems and appliances shown have not been tested and no guarantee as to their operability or efficiency can be given

Made with Metropix ©2015

